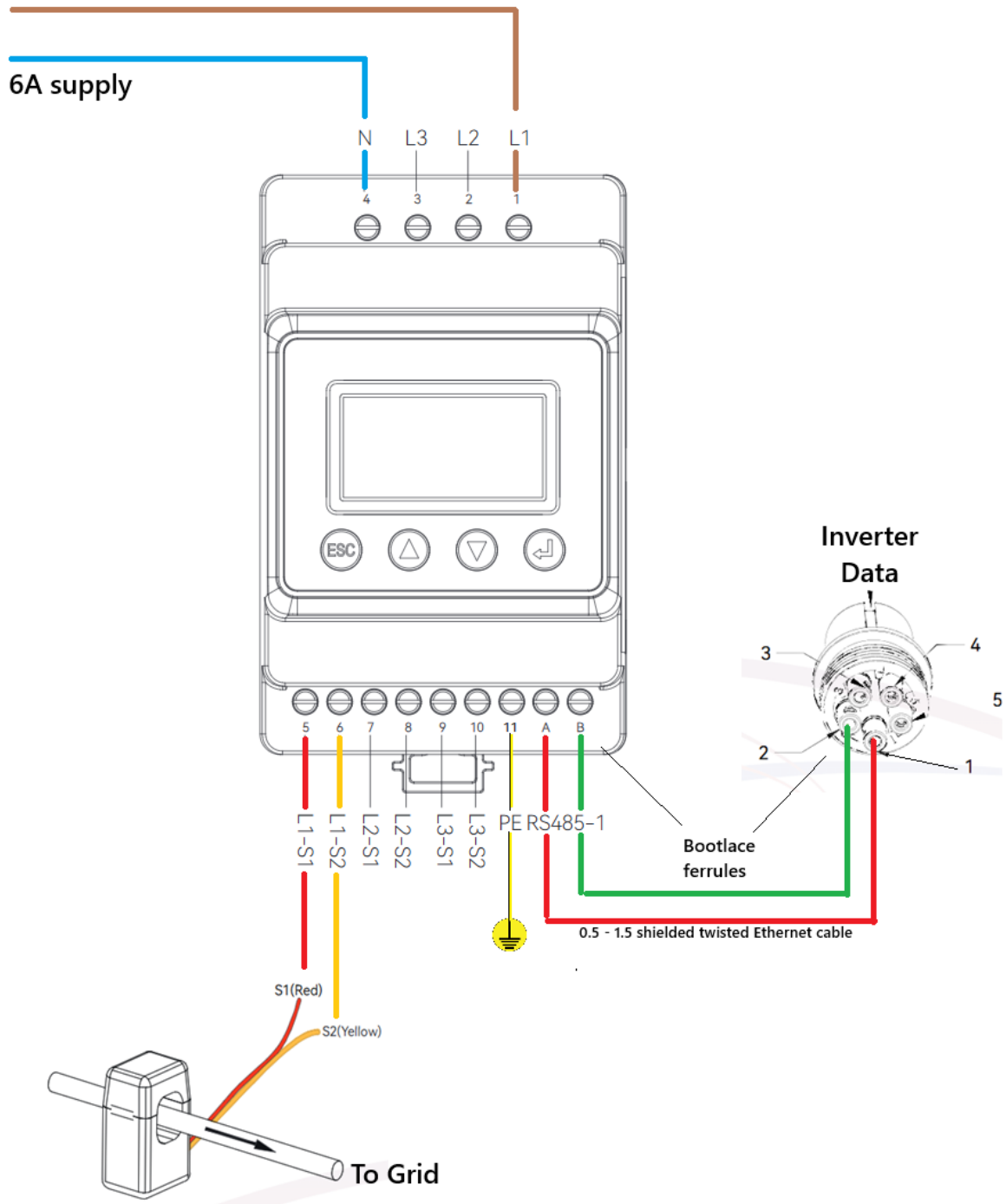


String Inverter & Meter Quick Guide

RMK Meter for String Inverters



Wi-Fi Antena



Please Note

Both the inverter and the RMK meter connect independently to the customers internet.

Install and commission the inverter as normal by using the installers app - see *below*:

Android

https://play.google.com/store/apps/details?id=instaGen.cloud.app&pcampaignid=web_share

IOS Store

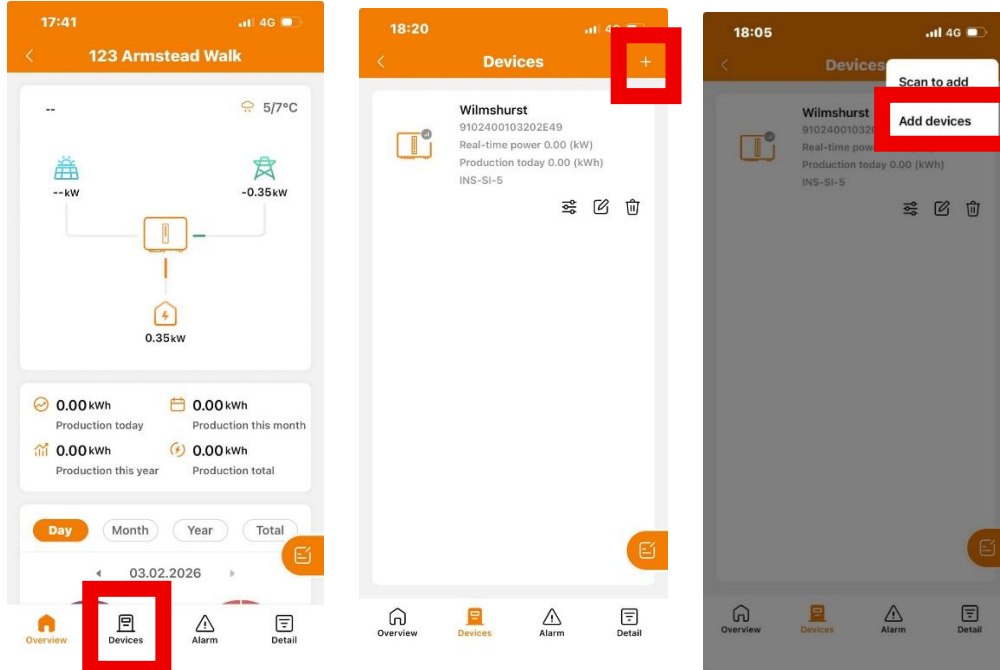
<https://apps.apple.com/gb/app/instagen-grid-inverter/id6738407189>

You can find the installer app quick guide here:

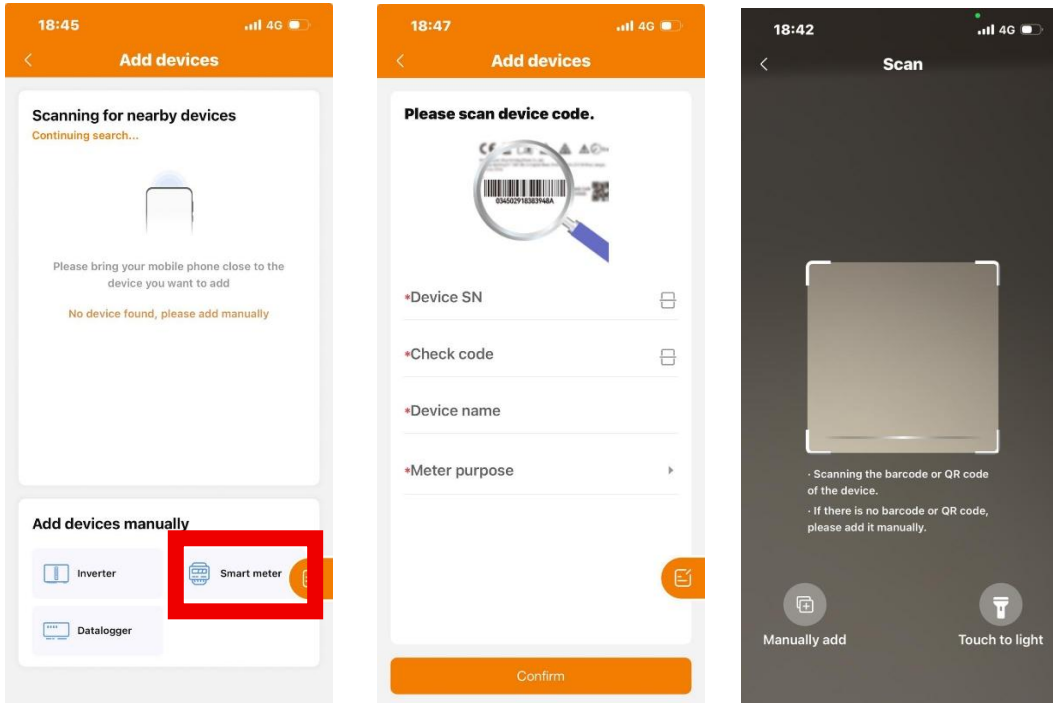
<https://www.instagroup.co.uk/wp-content/uploads/2025/08/InstaGen-Grid-Inverter-App-Guide.pdf>

Once the inverter has been set up and commissioned, please follow the bellow steps:

In the installer's app follow the guide below:



Click “Devices” then the + at the top of the screen then “Add Devices”

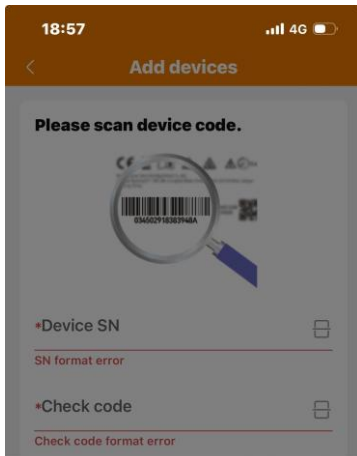


Click “Smart Meter” then:

Device SN: - (on side of meter and/or box) scan or enter manually.

Check code - (on side of meter) enter manually only.

Device name – Eg: 123 The Avenue DB2 (Can be anything for identification)



Meter purpose

On-grid meter

Mainly used for grid connection point control. Each sub-array only allows one meter to be connected.

Third-party meter

Defined as a PV output meter from a third-party manufacturer, multiple meters can be connected

Device purpose - “On-Grid Meter” – then click **Save**

C) Phone — connect Meter (RMK) to customer Wi-Fi

Make sure Wi-Fi enabled on phone.

Join the Meter (RMK) setup hotspot: WIFI-AP***** (last 8 digits = meter SN).

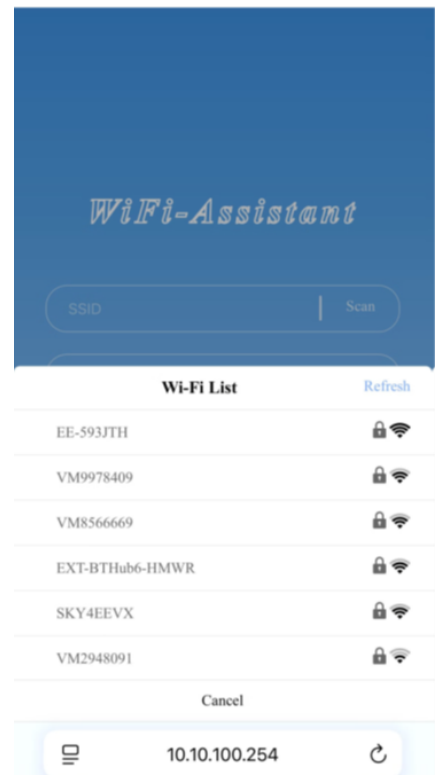
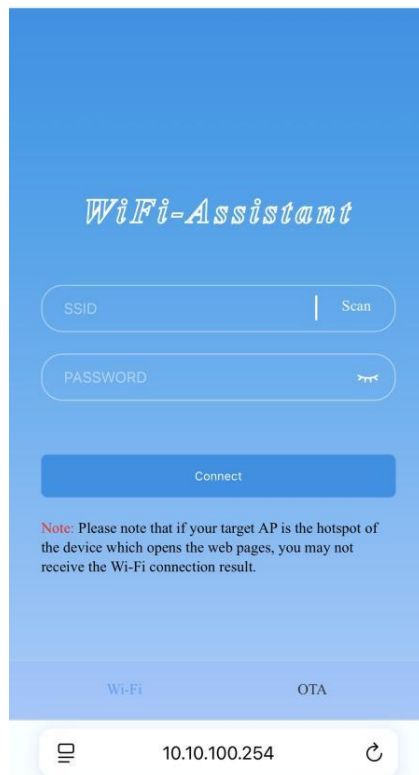
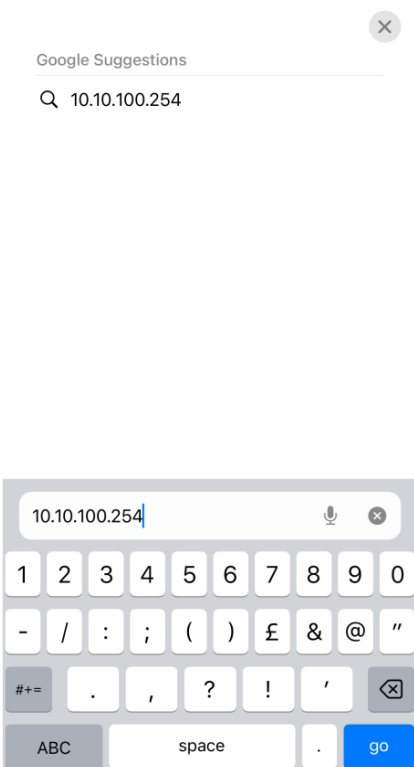
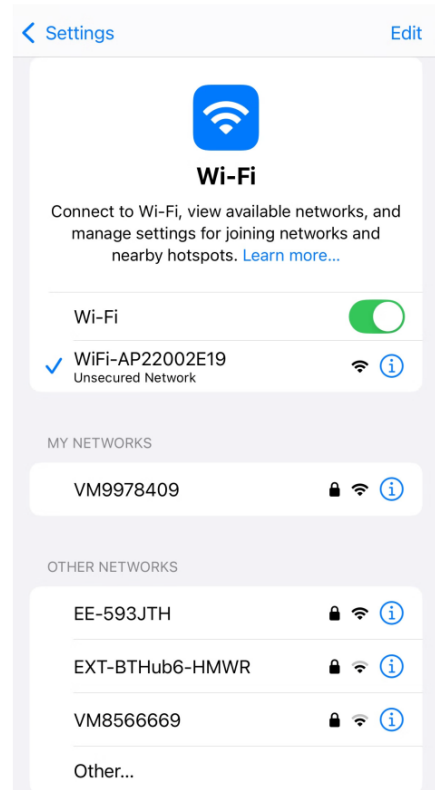
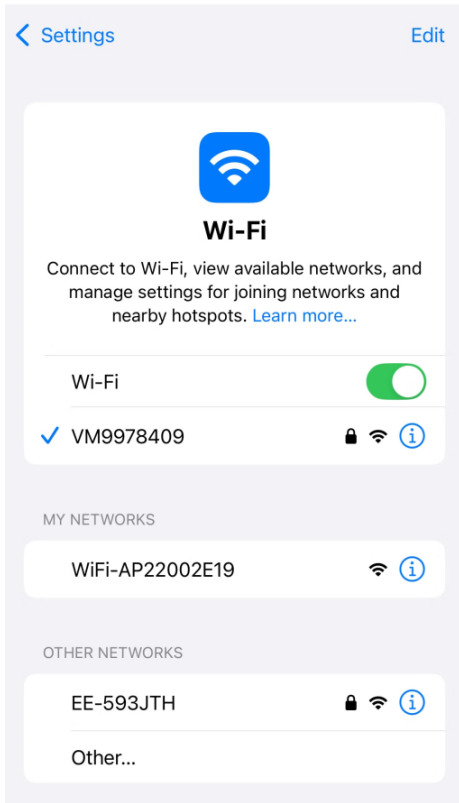
Open browser → go to 10.10.100.254.

Tap Scan.

Select the customer’s Wi-Fi SSID.

Enter Wi-Fi password (case-sensitive) → tap Connect.

Confirm “Connection succeeded” (Wi-Fi indicator should go steady).



Commissioning / settings

Wi-Fi connection to Meter (RMK) **Wi-Fi settings are usually set by default**

A) Inverter (OGS) screen — check Modbus address = 247 (this is usually the default setting)

Short press (~1s) to find General Settings.

Long press (~3s) to enter General Settings.

Short press (~1s) to find Modbus Addr.

Set Modbus Addr = 247 (short press changes number; long press confirms/next digit).

B) Meter (RMK) screen — select Wi-Fi mode

From the meter display, press ENTER → Input Password.

Enter password 1000.

Go to Comm Set → Connect Type → select WIFI → ENTER confirm.

For LAN connection to Meter (RMK)

A) Inverter (OGS) screen — set Modbus address = 247 (this is usually the default setting)

Short press (~1s) to find General Settings.

Long press (~3s) to enter General Settings.

Short press (~1s) to find Modbus Addr.

Check that the Modbus Addr = 247 (short press changes number; long press confirms/next digit).

B) Meter (RMK) screen — select LAN + set IP only if needed

From the meter display, press ENTER → you'll get Input Password.

Enter password 1000

Go to Comm Set.

Find Connect Type → set to LAN → ENTER to confirm.

If the customer router has DHCP enabled:

STOP (no IP settings required).

If DHCP is NOT enabled at customer router (static IP required):

Set DHCP Set = OFF

Set: IP Addr, Gateway Addr, Subnet Mask, DNS Addr

When prompted "Save the result?" → select YES.

